



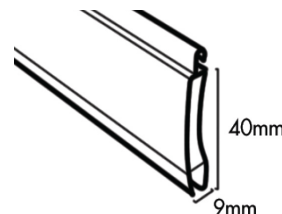
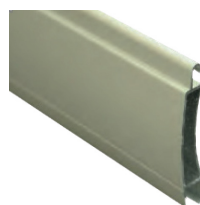
WARRIOR BAL 40 SHUTTER

OVERVIEW

The Warrior BAL 40 Bushfire Shutter is designed for residential and commercial applications in bushfire prone areas.

Manufactured with a 40mm curved aluminium slat profile, the system provides increased strength, security, and ember protection while maintaining a clean, unobtrusive appearance.

The Warrior BAL 40 Shutter has been tested in accordance with AS1530.8.1 and achieved a Bushfire Attack Level (BAL) rating of 40. Testing demonstrated resistance to radiant heat exposure of 40 kW/m² for 60 minutes with no ignition or flaming observed **without a window behind it**. As this product achieved BAL 40, it can also be certified to protect homes at BAL 19 and BAL 29.



Bushfire control issues Certificates of Compliance on completion of each and every installation.

COLOUR OPTIONS

Roller Shutter Colour Options



White



Cream



Sand



Black



Woodland Grey



Deep Ocean Blue



Natural Anodized



We believe people deserve to work & live in safe & beautiful buildings.



info@bushfirecontrol.com.au | 1800 218 258
www.bushfirecontrol.com.au





WARRIOR BAL 40 SHUTTER

TECHNICAL SPECIFICATIONS

Maximum Area	12 m ²
Weight	8 kg per m ²
Slat Height	1mm
Aluminium Thickness	1mm
Profile Thickness	9mm
Maximum Curtain Width (Standard Guide)	4m
Maximum Curtain Width (Extended Guide)	4.6m
Axle	50mm Circular



SOMFY 240V With Inis Uno



SOMFY 240V with Key Switch



SOMFY 240V with Transmitter



SOMFY 240V with CSI Override

BOXING OPTIONS

SQUARE BOXING

Sizes Available	Maximum Overall Height
150mm	1100mm
165mm	1600mm
180mm	2000mm
205mm	2800mm
230mm	3400mm
250mm	3800mm

BUSHFIRE ATTACK LEVELS

(BAL)	Description of predicted bushfire attack and levels of exposure
BAL - LOW	There is insufficient risk to warrant specific construction requirements
BAL - 12.5	Ember attack
BAL - 19	Increasing levels of ember attack and burning debris ignited by windborne embers together with increasing heat flux between 12.5 and 19 kW/m ²
BAL - 29	Increasing levels of ember attack and burning debris ignited by windborne embers together with increasing heat flux between 19 and 29 kW/m ²
BAL - 40	Increasing levels of ember attack and burning debris ignited by windborne embers together with increasing heat flux with the increased likelihood of exposure to flames
BAL - FZ	Direct exposure to flames from fire front in addition to heat flux and ember attack *Refer to FZ Shutters

CONTROL OPTIONS

MANUAL



Winder



Spring Assist

MOTORISED



ODS with E-Port



E-Trans



We believe people deserve to work & live in safe & beautiful buildings.

info@bushfirecontrol.com.au | 1800 218 258
www.bushfirecontrol.com.au